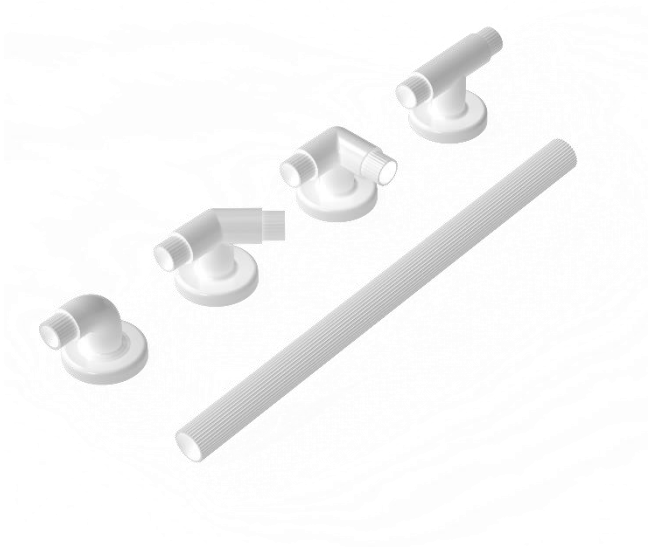


Plastic fluted modular system



Product details

Warranty:	2 years
Max rated load:	130 kg
Doc M compliant:	No
Suitable for wet areas:	Yes

Features

- Highly flexible modular solution
- Can be assembled on site or in factory
- Assembled using solvent cement giving permanent bond
- High quality ABS plastic UV stabilised to prevent discolouration
- No electrical earthing required
- Captive clip on flange cover to conceal fixings

Finish options

WH

White
RAL 9016

Product description

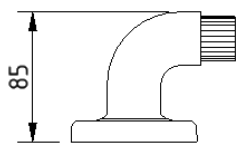
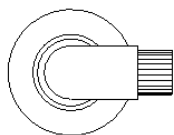
Product code

Plastic fluted modular system, handrail tube, 35mm diameter, 220mm, white (RAL 9016)	MGR-1/WH
Plastic fluted modular system, handrail tube, 35mm diameter, 380mm, white (RAL 9016)	MGR-3/WH
Plastic fluted modular system, handrail tube, 35mm diameter, 530mm, white (RAL 9016)	MGR-4/WH
Plastic fluted modular system, wall mounting elbow, white (RAL 9016)	MGR-8/WH
Plastic fluted modular system, wall mounting with 90° angle joiner, white (RAL 9016)	MGR-9/WH
Plastic fluted modular system, wall mounting with 180° angle joiner, white (RAL 9016)	MGR-10/WH
Plastic fluted modular system, wall mounting with 135° angle joiner, white (RAL 9016)	MGR-11/WH
Plastic fluted modular system, adhesive, 250ml	MGR-12

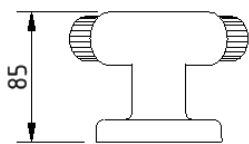
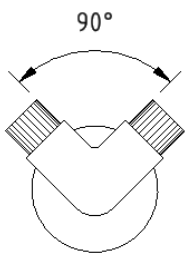
Disclaimer

NYMAS Group makes every effort to ensure that the information provided on this data sheet is correct. However, we cannot guarantee this, and accept no liability for any information or advice given on this data sheet.

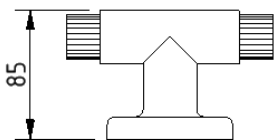
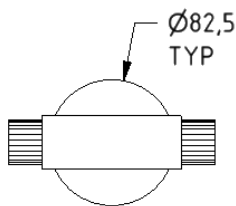
Dimensions (mm)



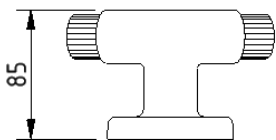
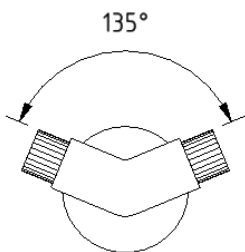
MGR-8



MGR-9



MGR-10



MGR-11

	MGR-1/**	MGR-3/**	MGR-4/**
DIM 'A'	220	380	530

