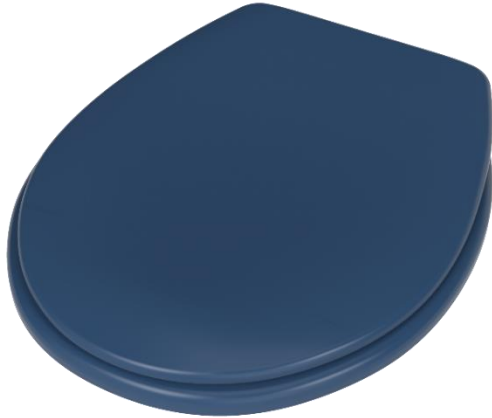


## Toilet seat with stainless steel hinge and lid



### Product details

Warranty:	2 years
Max rated load:	150 kg
Doc M compliant:	No
Suitable for wet areas:	Yes

### Features

- Anti-bacterial, strong and durable Duroplast seat
- Ergonomic and comfortable shape
- Stainless steel hinge
- Adjustable locating buffers
- Fits close coupled, low level, back to wall and wall hung pans

### Finish options

**WH**

White  
RAL 9016

**DB**

Dark blue  
RAL 5011

### Product description

Toilet seat with lid, stainless steel pillar hinge, dark blue (RAL 5011)  
Toilet seat with lid, stainless steel pillar hinge, white (RAL 9016)

### Product code

260016/DB  
260016/WH

### Disclaimer

NYMAS Group makes every effort to ensure that the information provided on this data sheet is correct. However, we cannot guarantee this, and accept no liability for any information or advice given on this data sheet.

## Dimensions (mm)

